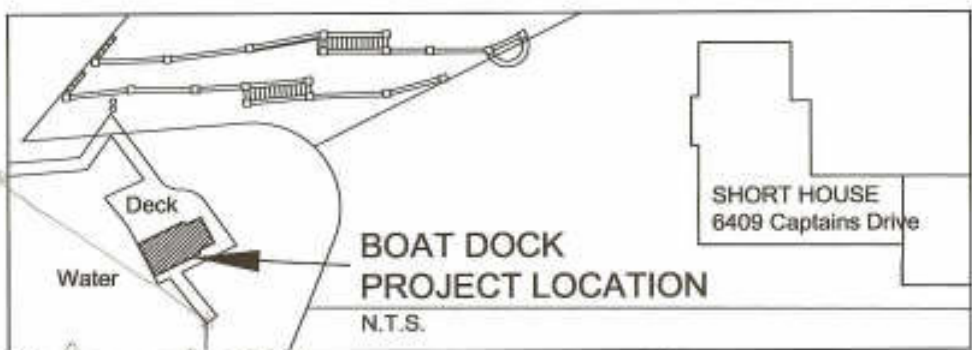




18' SNUG HARBOR BOAT



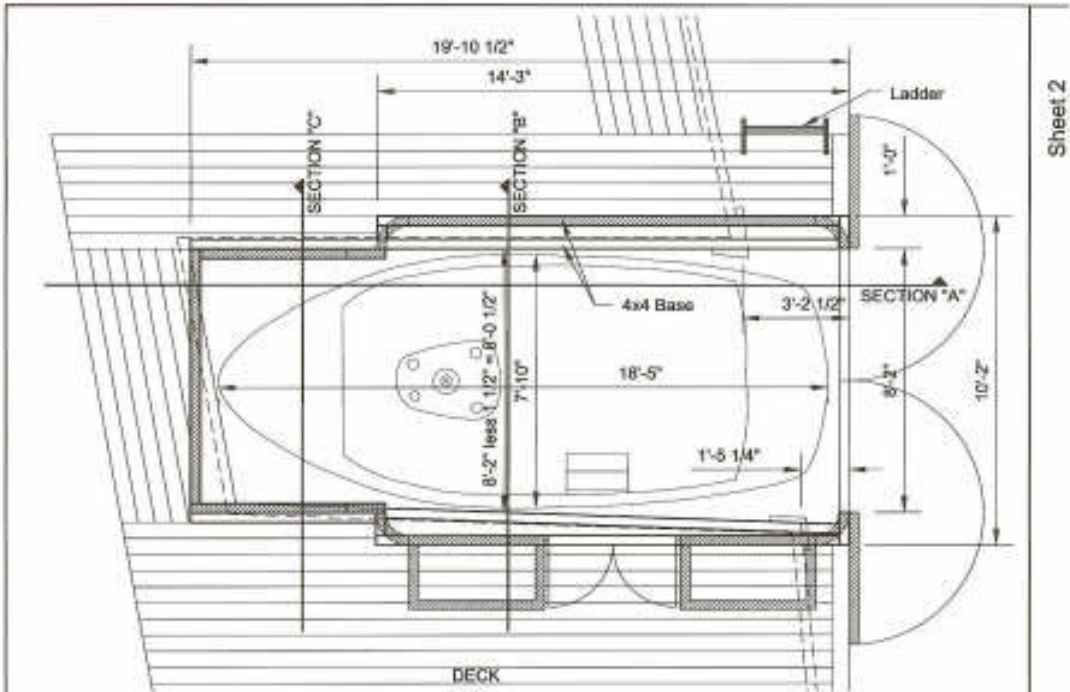
Thomas J. Coleman

*Yes
Jan Dushka*

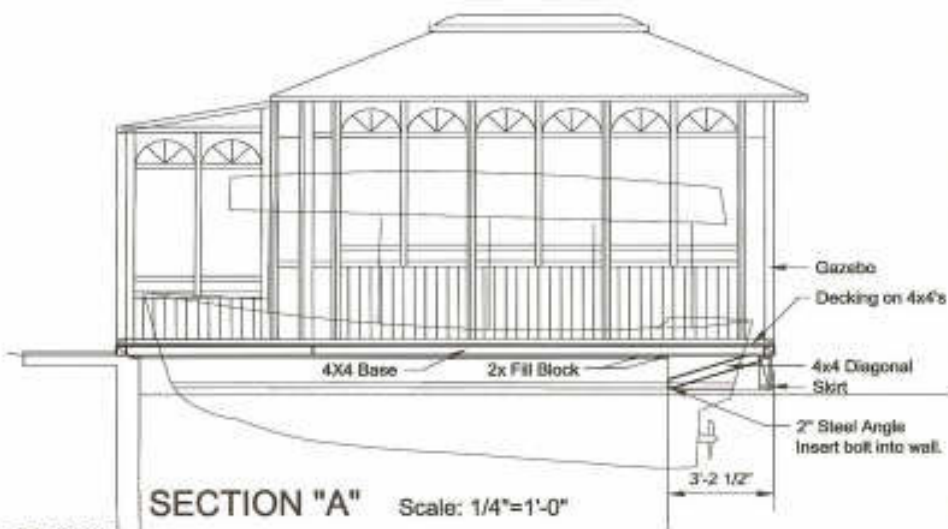
*Dennis Duda
The Project
Kiel...*



GAZEBO



PLAN Scale: 1/4"=1'-0"

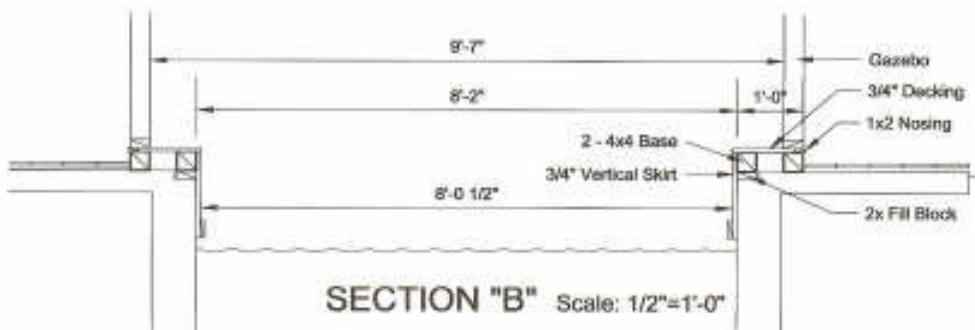
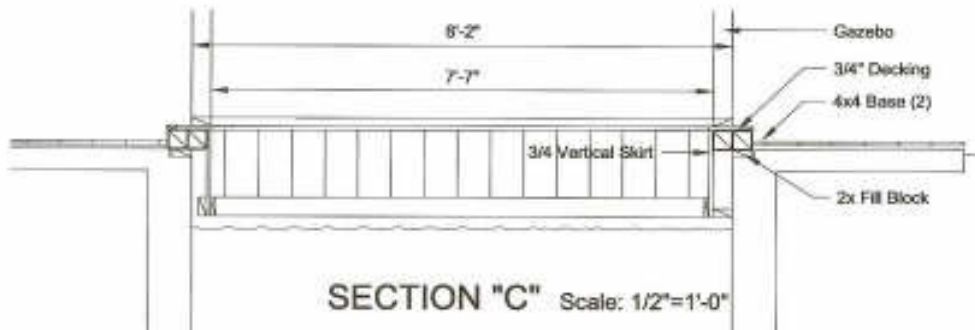
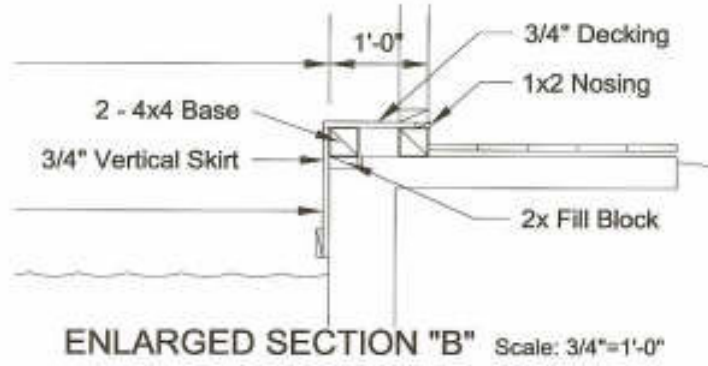


SECTION "A" Scale: 1/4"=1'-0"

Dec 31, 2007

Sheet 2

GAZEBO / BOAT DOCK PROJECT



Dec 31, 2007

**Long Range Planning Committee Report
To Ski Island board of Directors
January 8, 2008**

Ski Island Neighborhood Long Range Planning Meeting

The committee will be meeting January 16 to set up a mission statement for future meetings for input for long range projects.

Residents will be receiving a call from block captains, inviting them to either a 7 p.m., February 12th or 13th meeting to gather ideas for future Ski Island projects. It will be the time for them to share their vision of what they would like to see Ski Island to be in the future. Board members are urged to come to listen and participate.

The Long Range Planning Committee will use the information obtained in order of voiced priorities to make not only plans, but how and when those plans can be accomplished.

Westlake Fence Project

Wheels are moving, slowly. The City of Oklahoma City is requiring a revocable permit as well as a fence permit. Letters of no objection have been obtained by all the utilities involved, a letter of no objection is pending from Canyon North Association, and the permit is ready to be reviewed and approved by the City. At that point, Atlas Paving will be digging the footings (approx. 250 Ft.) along the area that has the drop off. They city will be absorbing this cost.

The more volunteer labor that Ski Island residents are willing to donate, the less the cost of this project will be.

Glenn Short has the plywood materials ready to make the forms for concrete work. We are projecting that as soon as the weather gets warmer the project will begin and estimated time to complete will be 60 days once the project begins.

Respectfully submitted by:
Kathy Worley & Glenn Short